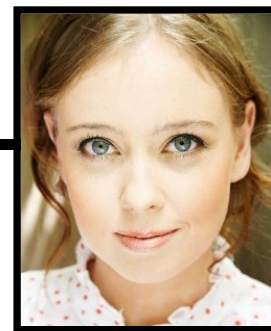


Katherine Wallace

Hair: Dark Blonde

Eyes: Blue

Height: 170cm



FILM

| | | |
|--------------------------|--------------------|-------------------------------------|
| X-MEN ORIGINS: WOLVERINE | Mutant Role | 20 th Century Fox/Marvel |
| LATE TUESDAY | Celine (Lead) | Arkitype Presents |
| YES, PLEASE | Ambrosia (Lead) | Arkitype Presents |
| ROUND AND ROUND | Cassie (Lead) | Arkitype Presents |
| GLORY | Young Glory (Supp) | Metro Screen |
| FIFTEEN MINUTES | Claire (Lead) | Powered Productions |

THEATRE

| | | |
|----------------------------|-------------------------|--------------------------|
| ALL'S WELL THAT ENDS WELL | Diana (Lead) | Stella Adler Studio |
| A DOLL'S HOUSE | Nora (Lead) | Stella Adler Studio |
| A MAN WITH FIVE CHILDREN | Annie (Lead) | New Theatre |
| ESLA AND FRINZ GO PARTYING | Brat (Supp) | Short and Sweet Festival |
| SCARED SCRIPTLESS | Ensemble Group | Impro Australia |
| BOMBSHELLS | Theresa (Lead) | HSC Drama |
| THE GOLDEN AGE | Mac and Georgina (Supp) | MSC Ensemble |
| FRIENDS (STAGE ADAPTATION) | Janice (Supp) | MSC Ensemble |

Commercials available upon request.

TRAINING

New York

Stella Adler Studio of Acting - Summer Conservatory

Lynette Sheldon - Stella Adler/Stanislawski Technique, Advanced Scene Study

Margie Haber - Advanced Cold Reading and Audition Intensive

Chrissy Fiorelli, NYC Casting Director - Casting Workshop

Sydney

Kate Gaul - Professional Acting Classes

Lyn Pierse - Improvisation

Melissa Bruder - Practical Aesthetics (Annex of Atlantic Theater Co, NY)

NIDA - Acting to Camera, Youth Acting Classes, Screen Performance Intensive

VOCAL TRAINING

John Higgins - American Accent

Margi Coen - Private Singing Tuition

Rowena Balos - Voice/Acting Connection

SKILLS

American Standard accent, dog grooming, surfing, manual driver's license, own car, sneezing on cue